



JACK24

24 Vdc gear motor
for large sectional doors,
ideal for intensive use



BENINCA[®]
TECHNOLOGY TO OPEN

JACK24

24 Vdc gear motor (side mounting) for sectional doors up to **35 m²**
Available in the **50 Nm** and **80 Nm** versions, both fitted with a quick-release system

24vdc

ENCODER

COMMERCIAL USE

with integrated control unit and encoder

ESA 7.0.5W

arc only

EASY INSTALLATION

Electro-mechanical gear motor for **side mounting** on the door's axis. The integrated control unit is **easy to access**, thanks to the front cover with hinges. **Wide range switching power supply (100 to 250 Vac, 50/60 Hz)**, **integrated radio receiver** with ARC-only coding and **512 storable transmitters, absolute encoder**

KNX

STC SYSTEM

BeUP

512

POWER AND ENERGY SAVING

Two versions: one develops a torque of up to **50 Nm** (JACK24.50 up to 20 m² – **maximum speed: 34 rpm**), and the other develops a torque of up to **80 Nm** (JACK24.80 up to 35 m² – **maximum speed: 22 rpm**). The **consumption reduction system (ESA+)** ensures **absorption lower than 0.5 W in stand-by mode**

COMPACT AND COMPLETE

Equipped with a **service light with 14 built-in LED lights** to ensure high light output. The compact actuator allows for quick and **easy mounting even in limited spaces**

CONTROL UNITS:

JACK24 ————— CP.JACK

BENINCA

100%
Made in Italy



PRECISION AND RELIABILITY

STC System device that enables torque management in relation to the position of the door, ensuring maximum safety

EASY PROGRAMMING AND CONNECTIVITY

Designed for **integrating KNX** home automation systems, thanks to the X.BE accessory. You can **programme via the BeUP app** by connecting the PRO.UP interface

ALWAYS STURDY AND RELIABLE

Grease-lubricated gear motor with **gaskets between the reducer housing and cover and between motor flange and reducer**; outlet shaft supported by **metal bearings**; absolute encoder supported by **self-lubricating bushes**. Operation guaranteed even in the event of a power failure through **backup batteries** that integrate perfectly into the motor (2x1.2 Ah batteries)

INTEGRATED SECURITY

Easy-to-control **quick-release system**. Anti-crushing system with **amperometric obstacle detection**. The absolute encoder adjusts the speed with which the door is opened and closed, preserving its durability

INSTALLATION NOTES:

• Thanks to the STC system and the absolute encoder, **installing an optical safety edge is unnecessary**. This way, you can save time and money

• Make sure that the door's maximum height is within the actuator's scope of application. Refer to the following formula to calculate the compatibility between door height and maximum number of revolutions:

$$\text{MAXIMUM DOOR HEIGHT} = 3,142 \times D \times 20$$

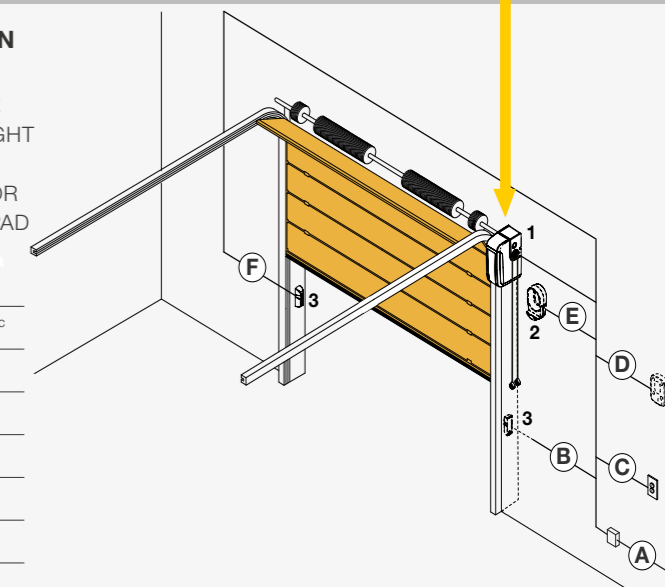
D = diameter of the cable winding drum

INSTALLATION DIAGRAM

1. GEAR MOTOR
2. FLASHING LIGHT
3. PHOTOCELLS
4. KEY SELECTOR
5. DIGITAL KEYPAD

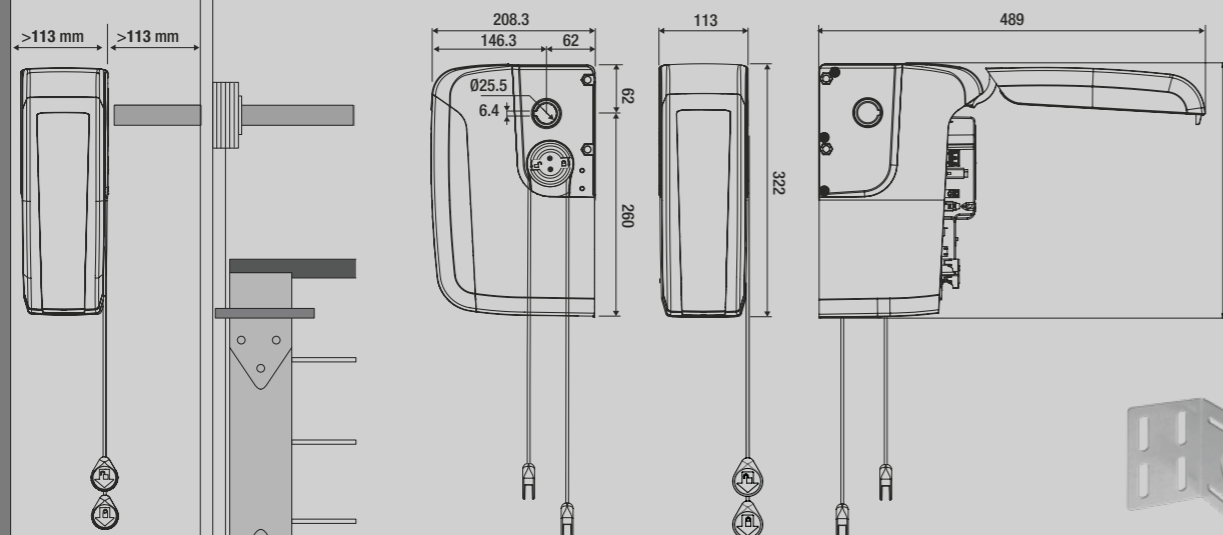
LIST OF CABLES

A	100-250 Vac 3x1,5mm ²
B	4x0,5 mm
C	3x0,5 mm
D	2x0,5 mm
E	2x0,5 mm +RGS8
F	2x0,5 mm



THE NARROWEST ON THE MARKET

Just 113 mm in width



Fixing plate included.

TECHNICAL DATA	JACK24.50	JACK24.80
Power supply	100 ÷ 250 Vac (50-60Hz)	100 ÷ 250 Vac (50-60Hz)
Motor supply	24 Vdc	24 Vdc
Max absorbed current	3.3 A	3.3 A
Power consumption in stand-by	≤ 0.5 W	≤ 0.5 W
Max torque	50 Nm	80 Nm
Maximum output rotations	20	20
Output speed	34 rpm	22 rpm
Shaft hole	1" (25,4 mm)	1" (25,4 mm)
Duty cycle	intensive use	intensive use
Protection level	IP40	IP40
Operating temperature	-20°C /+50°C	-20°C /+50°C
Door surface area	20 m ² /max	35 m ² /max
Weight	7.6 kg	7.7 kg

CP.JACK

CONTROL UNIT POWER SUPPLY

100÷250 Vac - 50/60 Hz

MOTORS POWER SUPPLY

24 Vdc

Automatic, semi-automatic and deadman logic | Multi-flat function | Logic for fast closing after photocell activation | Auxiliary output for optional electric-lock card | Photocell input programmable as active in opening-closing and in closing phases | Autosetting of operation parameters | Electronic torque adjustment with automatic calculation for each point in the stroke (STC SYSTEM) | Separate electronic adjustments of opening and closing speeds | Anti-crushing safety through amperometric detection and encoder management | Electronic slowdowns in opening and closing | Integrated ESA SYSTEM+ for energy saving | Advantouch system to configure parameters and manage radio transmitters | Number of manoeuvres | Programming access password | Maintenance warning



MANUAL UNLOCKING

24 Vdc motor output

Absolute encoder

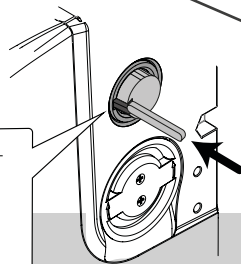
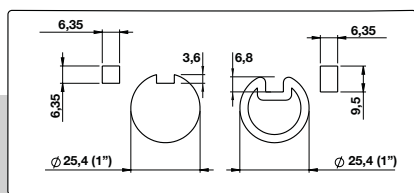
KNX system connector (X.BE card).
Programming and diagnostics
via the **BeUP app** (with PRO.UP card)

Integrated 433.92 MHz 512-code radio receiver
with ARC coding

Antenna input

TWO DRIVING KEYS

are supplied as standard.
They must be used based on
the shape of the spring shaft.



T4A protection fuse

LED courtesy light

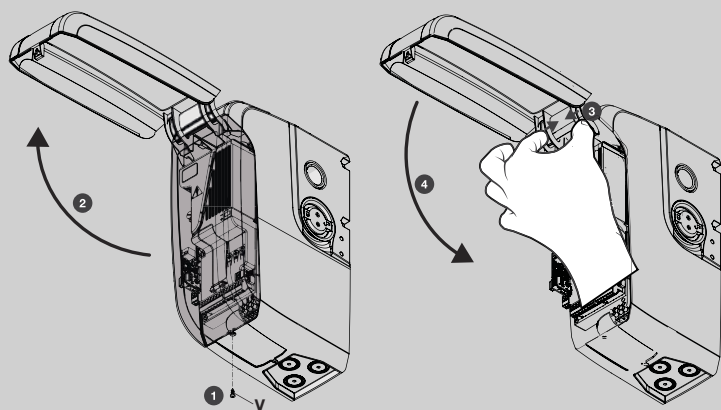
Built-in battery charger
compatible with DA.BT2
batteries

LCD display with three
programming buttons

OPEN input configurable
as pedestrian (PED).
Pedestrian opening even
through transmitter

Output for configuration
as gate open indicator,
courtesy light, area light
or second radio channel

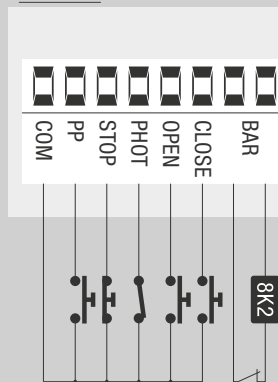
Removable terminal blocks



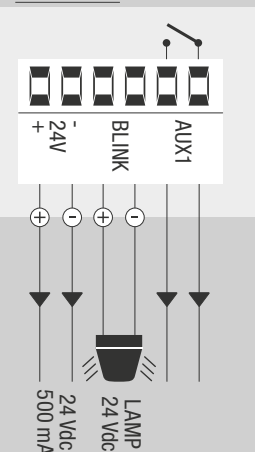
FRONT COVER WITH LOCK

The control unit can be **easily accessed** from the front cover with hinges. Once open, the casing remains blocked in position to facilitate the connections. Gently press the two coupling hinges to close again.

INPUTS



OUTPUTS



Benincà's connectivity

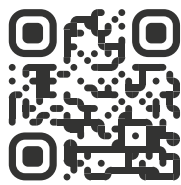
BeMOVE. AN APP FOR END-USERS

BeMOVE is the app that quickly connects your lights, automations, and garden irrigation system. You can control them through access time slots or **GPS positions**.

This way, you can open the gate while you're getting home. With the Event function, you can easily make whatever you want, whenever you want. Even if you're not home.

The **gateway HOOP** is the system's core. It interacts with the automations in mono and bidirectional mode as well as in a radio or wired mode. **g.MOVE** bidirectional transceivers show you the automation status. For example, if you've left the gate open, you can remotely check whether the lights are on. When you're away from home, you can check the automation status and enable them if needed using the **BeMOVE app**. You can also close the awnings if it starts raining.

The future is here.



bemove.beninca.com



g.MOVE

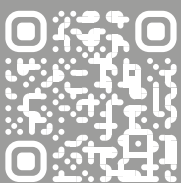


868 MHz module to install on control units for remote control through automation apps.

hhoop
GATEWAY



Dialogue interface between the app and the connected devices.



BeUP. ESPECIALLY FOR PROFESSIONALS

Working smartly

BeUP is the new application for iOS and Android operating systems, dedicated to professionals. If combined with **PRO.UP**, it allows you to programme all Benincà control units in a fast and easy way, while being comfortably seated in your lorry. Moreover, by connecting **PRO.UP** to the **cloud server**, you can save the installations made for a specific system. For future maintenance, you can also consult the system's details, past interventions and update the firmware. There's more! The app allows you to program the **BeMOVE** systems, be always updated with the latest products, consult instruction manuals and access training courses.

Choose to do the best work you possibly can.

PRO.UP

Remote programming and diagnostics interface.





VN.A30 (Ø 30 mm)
VN.A3175 (Ø 31,5 mm)
VN.A40 (Ø 40 mm)
 Shaft adapter.



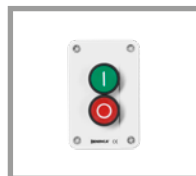
VN.RV
 Transmission set 1:1.8 for 1" shaft (25.4 mm) composed of two gears with external diameter 78 mm and 138.4 mm and chain L = 1 m.



VN.RM
 Transmission set 1:1 for 1" shaft (25.4 mm) composed of two gears with external diameter 78 mm and chain L = 1 m.



IPB.NO
 Industrial push-buttons with 2 normally open contacts



IPB.NC
 Industrial push-buttons with a normally open contact and a normally closed contact.



RF.SUN
 Battery-operated device recharged by means of a photovoltaic panel applied on a mobile edge.



RF
 Device with a non-rechargeable battery to be applied on a mobile edge, guaranteed battery duration of 2 years.



SC.RF
 Device powered at 12/24 Vdc with self-test function and 2 outputs for connection to electronic control units.



ID.TA
 Warning board.



IRI.TX4VA
 4-channel transmitter with Advanced Rolling Code and Rolling Code.



IRI.TX4AK
 4-channel transmitter with Advanced Rolling Code and Fixed Code.



IRI.LAMP-Y
 Flashing yellow light, 20-255 Vac/dc with integrated antenna.



IRI.KPAD
 Battery operated wireless vandal-proof digital keypad with alert buzzer and backlit buttons. Triple coding: Rolling Code, Programmable Code and Advanced Rolling Code. 254 memorisable codes.



JACK24.CB
 Kit including 1 cable and 2 brackets for battery installation and operation even in the event of a power failure. **[5 pcs pack]**



X.BE
 Electronic interface board between the KNX communication system and Beninca automations.



J.LOCK
 Electric lock 24 Vdc with knob for manual unlocking.



LSR.D50
 Up to 5,5 m x 5,5 m.
LSR.D99
 Up to 9.9 m x 9.9 m.
 Laser opening and safety sensor for industrial doors, EN12453 type E certified. Adjustable detection field.



TX.LSR
 Remote control for the adjustments of LSR sensors.



AUTOMATISMI BENINCA SpA
 Via del Capitello, 45
 36066 Sandrigo (VI) ITALY
 T +39 0444 751030
 sales@beninca.com

www.beninca.com